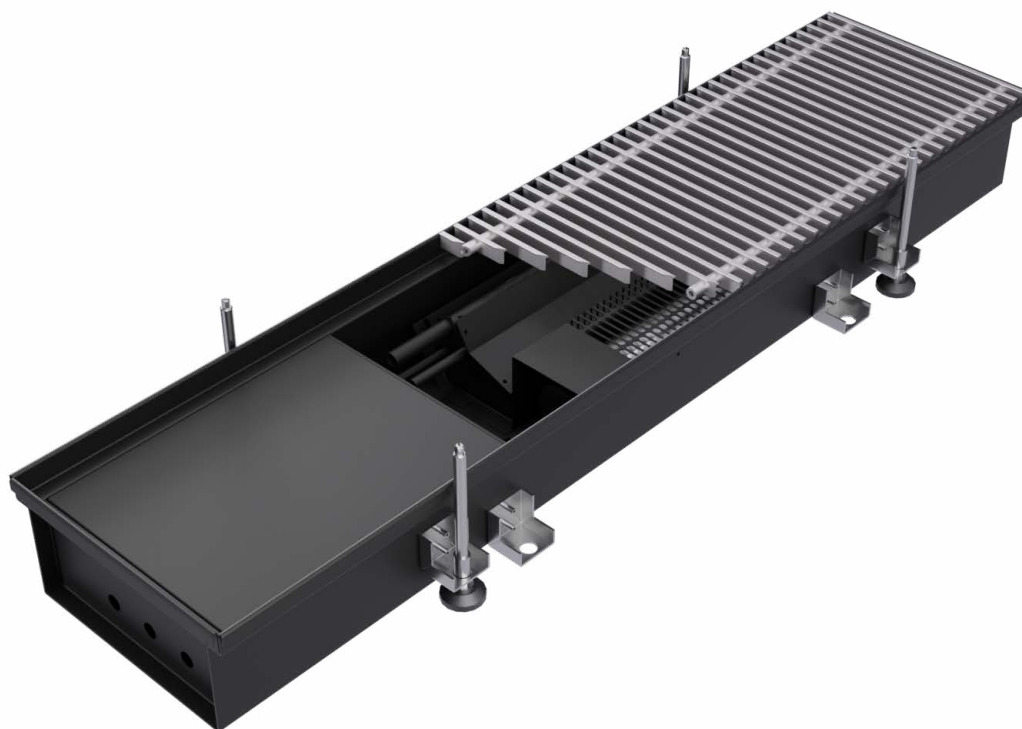


FAN ASSISTED ELECTRIC TRENCH HEATER

eVKN-10/17,6/L (L)

VERANO
G L O B A L



The eVKN fan assisted electric trench heater has triple thermal protection:

- ELECTRONIC - after exceeding the 1st threshold of the airflow temperature, electronic power limitation,
- SOFTWARE - protection against overheating - adjustment blowing temperature to ambient temperature,
- ELECTROMECHANICAL - bimetallic protection.

Low thermal inertia and no need to connect a water system, make eVKN an undoubted leader among trench heaters. The temperature in the room changes very quickly thanks to the use of a quiet and efficient fan with a 24V DC EC motor.

STANDARD EQUIPMENT:

- Trench (casing) made of galvanized steel sheet in RAL 9005 black,
- Efficient heating element made of stainless steel: 230 V AC high efficient electrical heater,
- Modern fan with silent and efficient 24V DE EC motor controlled by 0-10V voltage,
- Integrated control module enclosed in an aluminum casing,
- Connection space cover,
- Fan cover with airflow baffle,
- Trench struts,
- Fixing anchors,
- Levelling legs.

ADDITIONAL EQUIPMENT:

- Trench (casing) powder coated in any RAL colour,
- roll-up grille made of natural or anodized aluminium with 8 mm gap between the bars,
- Decorative frame (F or L type) made of natural or anodized aluminium,
- Assembly protection fibreboard for transporting and installation,
- Raised floor kit,
- Wall-mounted controller: VERANO-2 Wi-Fi or VER-24S.

* When ordering a trench heater, it is necessary to order a grille which acts as a touch guard. The grille is factory-fitted and can only be removed using the tools.

DIMENSIONS	[mm]
Trench height (H)	100
Bottom width of the trench (B)	176
Top width of the trench (Bk)	200
Trench length (L)	800, 1000, 1300
CONNECTIONS	TYPE
Connection side	Left (L)

EXAMPLE OF ORDER CODE:

eVKN-10/17,6/L (L)

Trench height [cm]
Trench width [cm]
Trench length L [cm]
Connection side L-Left

TECHNICAL DATA

Trench length	Operating mode	Heating output of the device	Electric power demand of the fan	Maximum current of the device	Sound pressure level	Sound power level	Number of fan motors
L [mm]	[-]	[W]	[W]	[A]	[dB(A)]	[dB(A)]	[-]
800	20%	294	0,47	3,5	18	26	1
	40%	443	0,60		20	28	
	60%	630	1,34		25	33	
	80%	740	2,26		32	40	
	100%	750	2,81		38	46	
1000	20%	594	0,72	7,5	17	25	1
	40%	906	1,20		19	27	
	60%	1355	1,92		23	31	
	80%	1610	2,90		30	38	
	100%	1633	4,18		37	45	
1300	20%	857	0,98	11,0	18	26	1
	40%	1345	1,34		19	27	
	60%	1719	1,92		24	32	
	80%	2439	2,93		32	40	
	100%	2459	4,37		38	46	

