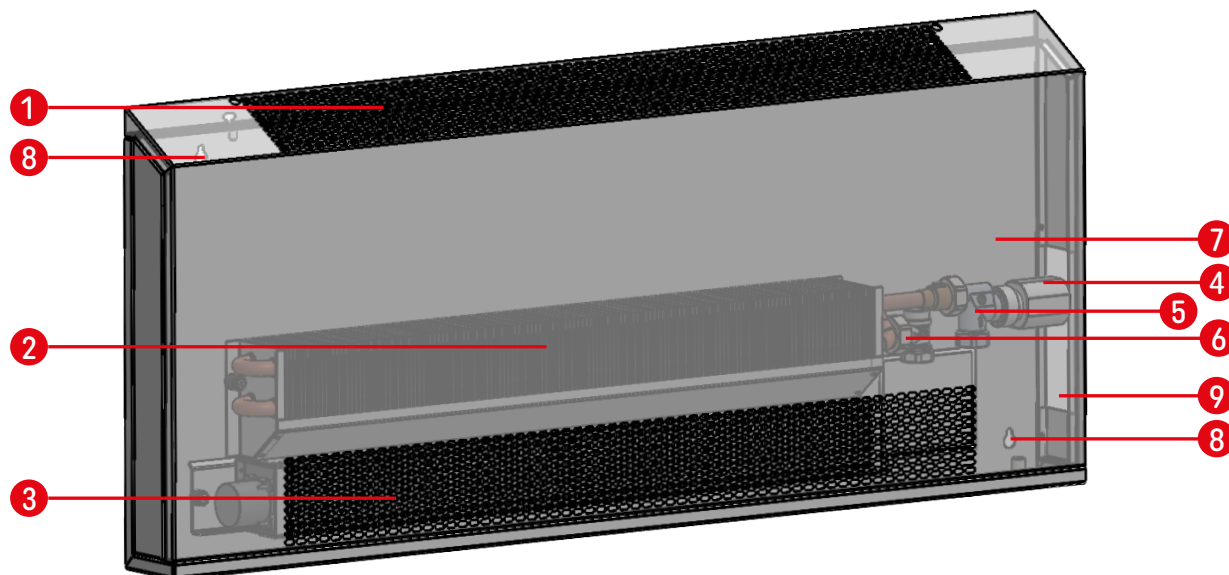


FAN ASSISTED WALL-MOUNTED HEATER

NVKN2-40/7,5/L



List of elements:

- ① – Punched grille, oval type
- ② – Heat exchanger with back plate and air vent
- ③ – 24V DC EC Fan
- ④ – 24V AC/DC actuator*
- ⑤ – Thermostatic valve*
- ⑥ – Lockshield valve*
- ⑦ – Casing made of galvanized steel powder coated in White RAL 9003
- ⑧ – Fixing slots
- ⑨ – Opening slot

* Note: Additional equipment, on request

FAN ASSISTED WALL-MOUNTED HEATER

NVKN2-40/7,5/L

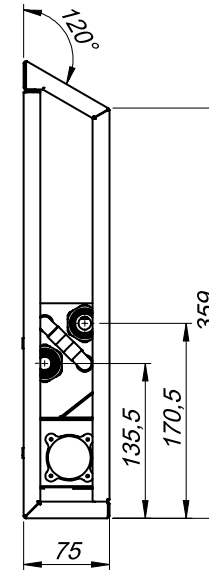
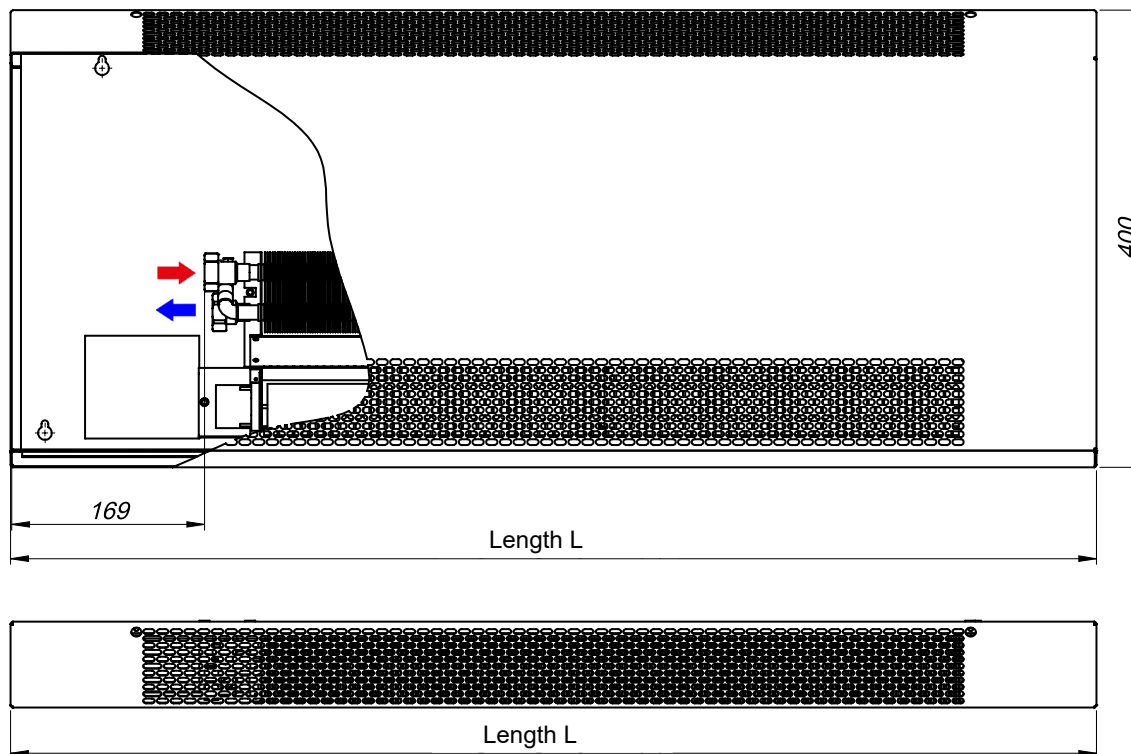
TECHNICAL DATA

DIMENSIONS

Height: 400mm
Width: 75mm
Length: 950-1640mm

CONNECTIONS

Water connection side: Right (P) standard, Left (L) option, Opposite end (OPP) option.
Connection threads: GW 3/4" female thread
← Supply / → Return



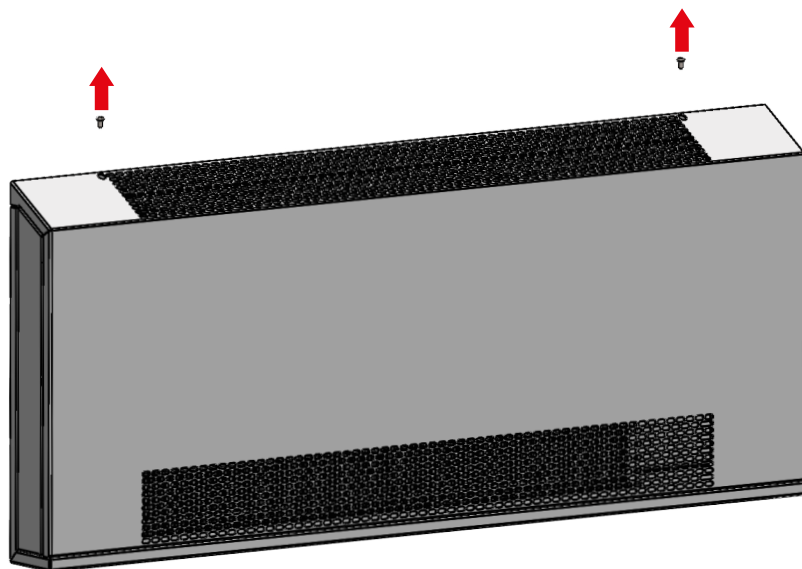
FAN ASSISTED WALL-MOUNTED HEATER

NVKN2-40/7,5/L

INSTALLATION MANUAL

1. In order to install the device, first remove the casing by following steps listed below:

- unscrew the screws* securing the front panel with the rest of the heater,
- remove the casing by lifting it upwards.

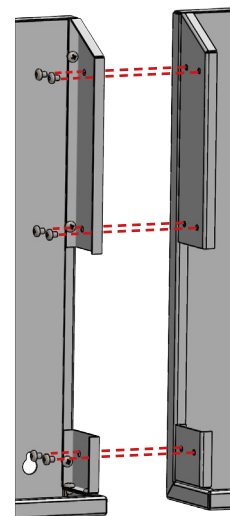
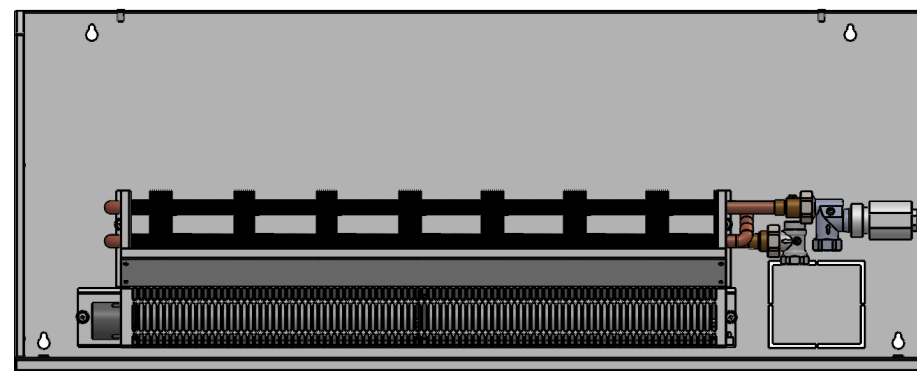


*Note: The number of mounting points may vary depending on the length of the unit.

2. After dismantling the elements listed in point 1, proceed to mounting the device to the wall.

WALL MOUNTING

- measure and mark on the wall the location of the fixing points,
- drill the holes in the wall for expansion bolt and fixing screws supplied with the device,
- hang and level the back plate on the wall.



Note: When connecting units into continuous runs, remember to level the entire run before screwing the heaters together!

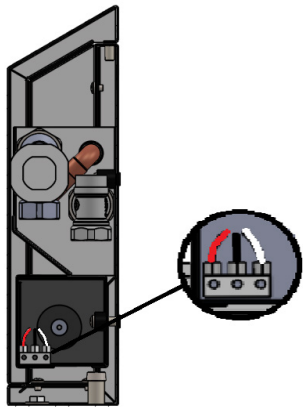
FAN ASSISTED WALL-MOUNTED HEATER

NVKN2-40/7,5/L

INSTALLATION MANUAL

3. Once the unit is fixed, proceed with the water connections and install accessories such as valves, actuator, etc, remember to insulate all pipes and valves. Fit the supply connection to the stub pipe equipped with an air vent. The connection of the half unions with the rubber o-ring have to be tightened with a force not exceeding 28 Nm. After completing the plumbing work, perform a leak test and vent the device.

4. Next proceed with the electrical connections.



Fan electric connection:

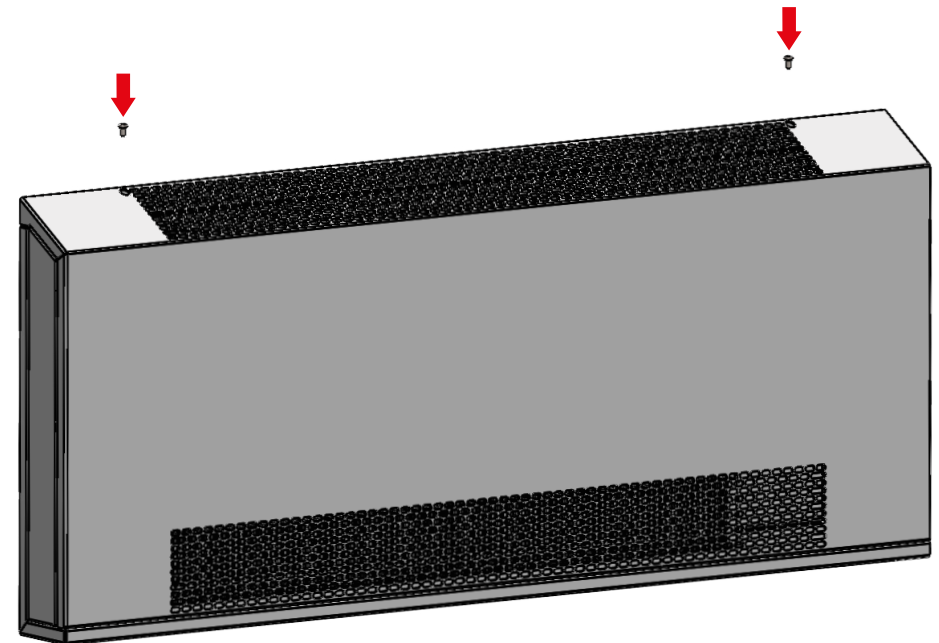
- **RED:** positive +24 V DC
- **BLACK:** negative 24 V DC
- **WHITE :** control voltage 0-10 V DC

Recommended wire type: **LIYCY**

Allowed wire type: **LIYY**

Electrical wires routing should be done in accordance with the applicable standards of the electrical industry. The cable cross section should be determined in accordance with electrical installation project based on the voltage drop calculations for the planned wires routing. The electrical connection should be made according to the diagram attached on the last page of this manual. It is recommended to make electrical connections on the opposite side to the water connection.

5. After the hydraulic and electric connections, assemble the front casing back on the heater. It is necessary to remember to screw the mounting screws in the indicated places.



FAN ASSISTED WALL-MOUNTED HEATER

NVKN2-40/7,5/L

INSTALLATION MANUAL

MAINTENANCE MANUAL

It is essential for the efficiency of the device to keep its interior clean. The device should be cleaned of dust that has settled on the heat exchanger and fans at least once a year before heating season. To avoid failure of electrical components, make sure that no water or other liquids get inside.

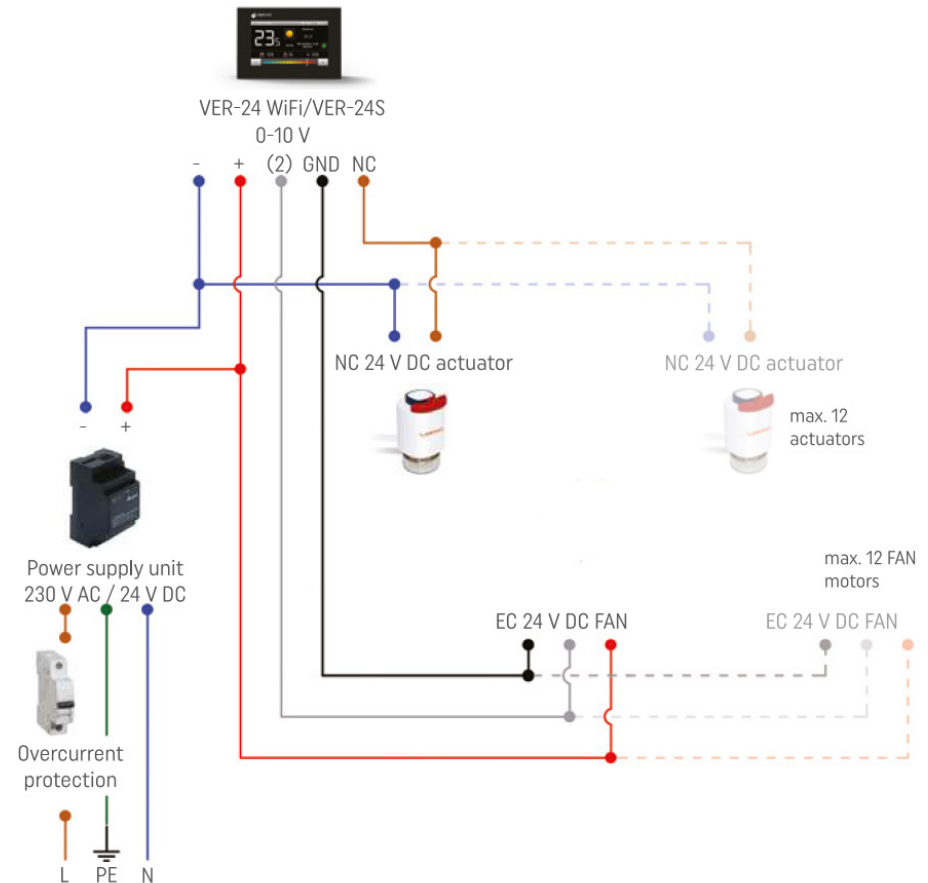
Damage or improper operation resulting from contamination of the device interior is not subject to warranty repair or replacement.

To clean the inside of the device, follow the steps below:

- disconnect the device from the power source,
- dismantle the casing of the device in accordance with point 1 of this manual,
- clean the unit elements from dust with a soft-bristle brush or compressed air,
- the remaining dirt should be cleaned with a slightly damp cloth without detergents,
- install the casing of the device in accordance with point 5 of this manual.

NOTE: During the heating period, perform maintenance on the cold device.

ELECTRIC WIRING DIAGRAM



NOTE: Only properly skilled and trained personnel, holding licenses and observing applicable standards can install electric connections. Power can only be switched back on when the correctness of the whole wiring was checked and approved. Due to use of safe low voltage fans the heaters can only be powered by 24 V DC voltage. It is prohibited to connect the heaters directly to 230 V AC power grid.

FAN ASSISTED WALL-MOUNTED HEATER

NVKN2-40/7,5/L