

# FAN ASSISTED WALL-MOUNTED HEATING AND COOLING UNIT

NCVK2-60/14,7/L (L/P)

2-pipe fan assisted wall-mounted heating and cooling unit, one device with two features. Use of modern controls, ensures adequate thermal comfort in summer and winter. Modern design and a selection of casings, grilles and RAL colours make it fit perfectly into the interior. Thanks to the use of a quiet and efficient fan with a 24V DC EC motor, it allows you to reach the required temperature faster than natural convection. It is ideal for low-temperature systems equipped with heat pumps or condensing boilers.

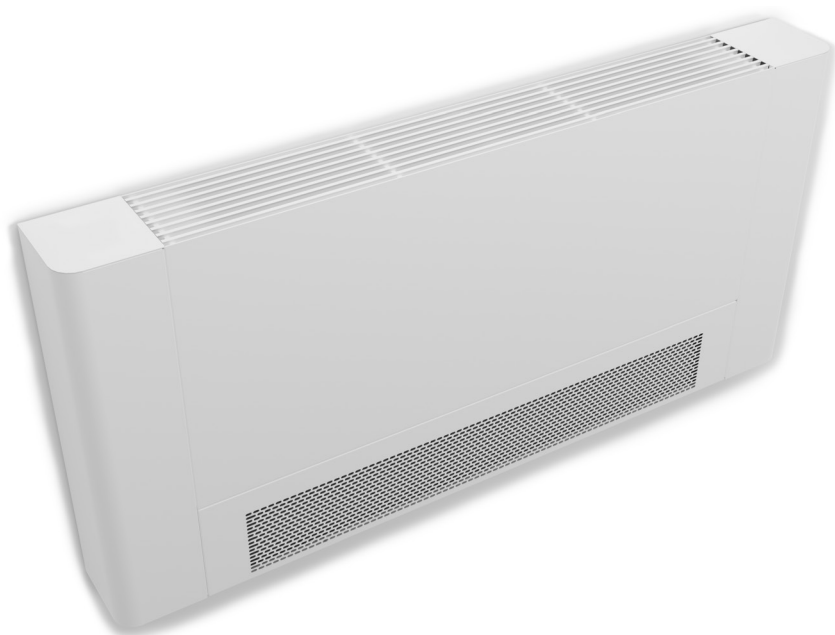
**VERANO**  
G L O B A L

DIMENSIONS	[mm]
Height	600
Width	147
Length (L)	800-1570

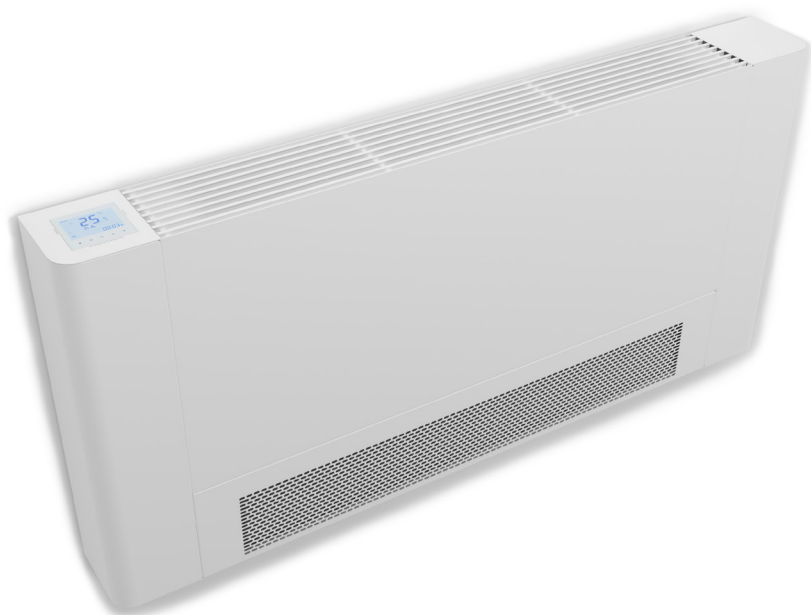
CONNECTIONS	TYPE
Connection side	Right (P) standard
	Left (L) option
Connection threads	3/4" female thread (basic version)
	1/2" female thread (plug&play version)

- Standard heating and cooling output [W] compliant to EN16430-1:2015-02.
- Control voltages for the respective modes of operation: Min – 2 V, Med – 4 V, Max – 6 V, Boost – 10 V.
- Min, Med, Max fan speeds are for continuous operation, the Boost mode is for speed heating or cooling.
- Sound power level according to ISO-3745 standard, sound pressure level measured at distance of 2 m to the heater, in a 100 m<sup>3</sup> volume room. Reverb time - 0,5 s, room damping - 8 dB(A).
- Maximum permissible operating pressure: 1,0 MPa.
- Test pressure: 1,3 MPa.
- Maximum hydraulic pressure: 1,69 Mpa.
- Maximum operating temperature: 110°C.

## BASIC VERSION



## PLUG&PLAY VERSION



ORDER CODE:

**NCVK2-60/14,7/Lg (L/P)**

Trench height [cm]

Trench width [cm]

Trench length [cm]

Connection side L-Left / P-Right

[www.verano-global.com](http://www.verano-global.com)

# FAN ASSISTED WALL-MOUNTED HEATING AND COOLING UNIT

NCVK2-60/14,7/L (L/P)



## TECHNICAL DATA

Trench length	Operating mode	HEATING									COOLING							
		75/65/20 °C			55/45/20 °C			35/30/20 °C			17/19/28 °C				7/12/27 °C			
		Heat output	Pressure loss	Water flow rate	Heat output	Pressure loss	Water flow rate	Heat output	Pressure loss	Water flow rate	Sensible cooling output	Total cooling output	Pressure loss	Water flow rate	Sensible cooling output	Total cooling output	Pressure loss	Water flow rate
[mm]	[-]	[W]	[kPa]	[l/h]	[W]	[kPa]	[l/h]	[W]	[kPa]	[l/h]	[W]	[W]	[kPa]	[l/h]	[W]	[W]	[kPa]	[l/h]
800	Min	1703	1,77	150	975	0,67	85	375	0,42	65	240	240	0,95	103	354	433	0,38	61
	Med	2386	3,21	210	1367	1,21	119	526	0,76	91	398	398	2,32	171	587	703	0,92	101
	Max	3004	4,82	264	1720	1,81	150	662	1,14	115	514	514	3,64	221	758	898	1,44	130
	Boost	3826	7,37	337	2191	2,77	191	843	1,74	146	722	722	6,62	310	1065	1269	2,61	182
980	Min	1974	2,89	174	1151	1,12	100	456	0,74	79	294	294	1,71	126	489	614	0,83	84
	Med	3088	6,34	272	1800	2,46	157	714	1,63	124	546	546	5,08	235	907	1138	2,47	155
	Max	3981	9,91	350	2320	3,84	202	920	2,55	159	694	694	7,75	298	1153	1420	3,76	197
	Boost	5372	16,80	473	3131	6,50	273	1241	4,31	215	1017	1017	15,18	437	1690	2064	7,38	289
1270	Min	3240	1,26	285	1849	0,47	161	707	0,29	122	455	455	0,68	196	647	776	0,25	111
	Med	4459	2,21	392	2545	0,83	222	973	0,52	168	753	753	1,64	324	1070	1229	0,61	183
	Max	5723	3,43	504	3266	1,28	285	1249	0,80	216	969	969	2,55	416	1377	1623	0,94	236
	Boost	7197	5,13	633	4107	1,92	358	1570	1,19	272	1333	1333	4,46	573	1895	2256	1,65	325
1570	Min	3737	2,09	331	2187	0,81	191	861	0,53	149	554	554	1,21	238	900	1101	0,57	154
	Med	5571	4,16	490	3234	1,60	282	1274	1,05	220	974	974	3,27	419	1582	1976	1,53	271
	Max	7212	6,55	635	4187	2,52	365	1649	1,66	285	1248	1248	5,06	536	2028	2487	2,37	347
	Boost	9470	10,57	833	5498	4,07	479	2165	2,67	375	1784	1784	9,47	767	2898	3540	4,43	496

Trench length	Operating mode	Sound pressure Level	Sound power Level	Electric power	Current	Number of fan motors
[mm]	[-]	[dB(A)]	dB(A)]	[W]	[A]	[-]
800	Min	19	27	2,0	0,08	1
	Med	27	35	3,8	0,16	
	Max	35	43	7,6	0,32	
	Boost	50	58	21,7	0,90	
980	Min	21	29	2,0	0,08	1
	Med	29	37	4,5	0,19	
	Max	37	45	9,3	0,39	
	Boost	53	61	26,0	1,08	
1270	Min	25	33	2,1	0,09	1
	Med	32	40	7,0	0,29	
	Max	39	47	15,6	0,65	
	Boost	54	62	44,4	1,85	
1570	Min	24	32	4,0	0,17	2
	Med	31	39	8,2	0,34	
	Max	39	47	16,8	0,70	
	Boost	54	62	47,6	1,98	

# FAN ASSISTED WALL-MOUNTED HEATING AND COOLING UNIT

NCVK2-60/14,7/L (L/P)

**VERANO**  
G L O B A L

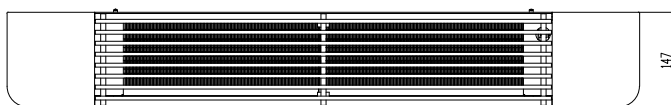
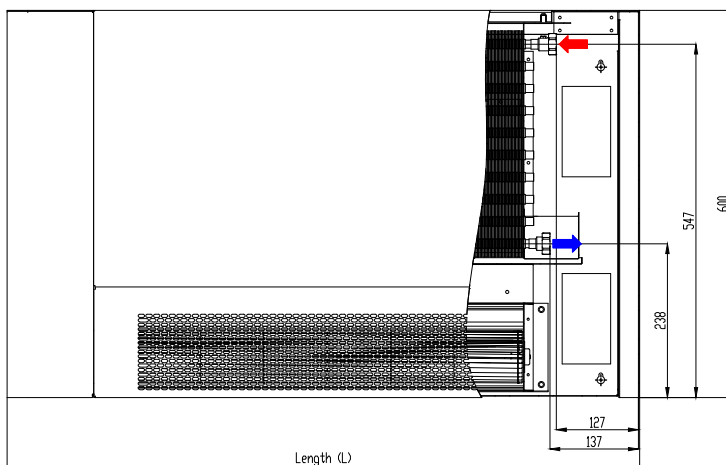
## BASIC VERSION

### STANDARD EQUIPMENT:

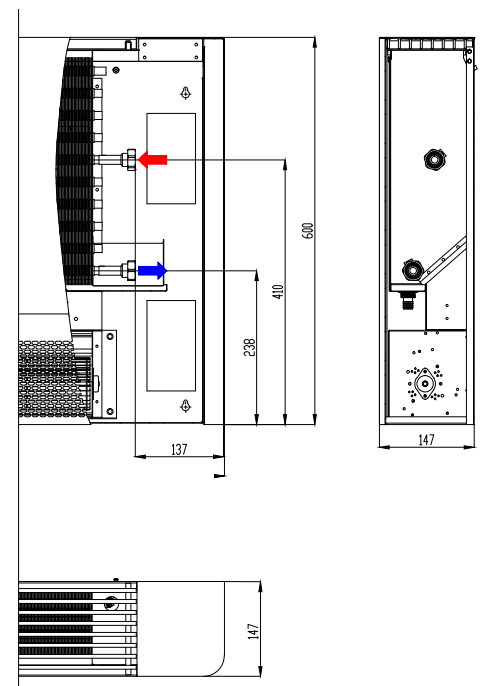
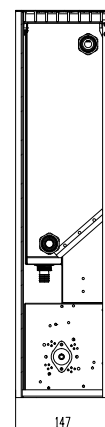
- Casing made of galvanized steel, powder coated in white RAL 9003
- Copper-aluminium heat exchanger with air vent
- Front grille: oval
- Top grille: linear aluminium, powder coated in white RAL 9003
- Modern fan with silent and efficient 24V DC EC motor
- Fan cover with airflow baffle
- Water connection with  $\frac{3}{4}$ " female thread
- Assembly kit
- Condensate drain pan.

### ADDITIONAL EQUIPMENT:

- Casing painted in any RAL colour
- Custom front grille type: honeycomb
- Custom top grille type: linear or roll-up, natural or anodized aluminium
- Condensate pump
- Valves and control system (actuator, controller, power supply)
- Anti dust filter (causes an output decrease by approx 10%).



Note: Applies to lengths 800 and 980mm.



Note: Applies to lengths 1270 and 1570mm.

# FAN ASSISTED WALL-MOUNTED HEATING AND COOLING UNIT

NCVK2-60/14,7/L (L/P)

**VERANO**  
G L O B A L

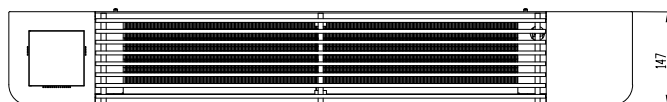
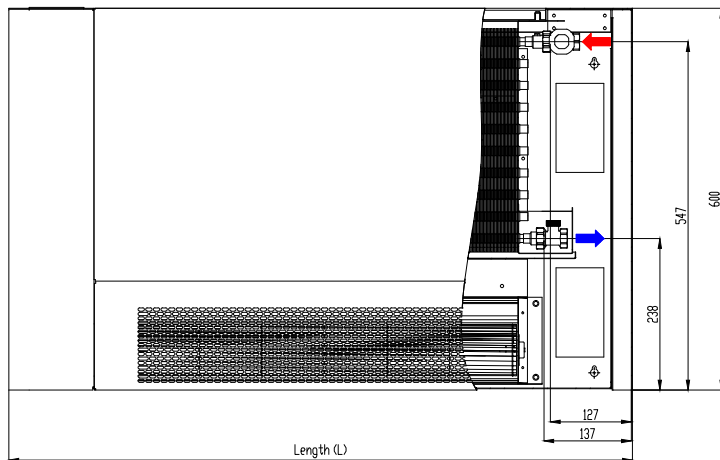
## PLUG&PLAY VERSION

### STANDARD EQUIPMENT:

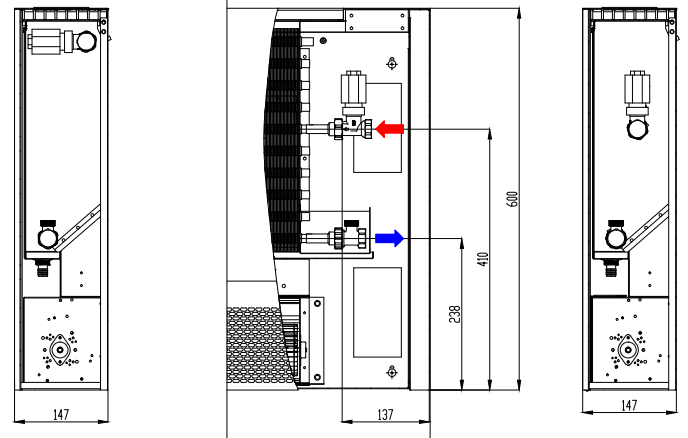
- Casing made of galvanized steel, powder coated in white RAL 9003
- Copper-aluminium heat exchanger with air vent
- Front grille: oval
- Top grille: linear aluminium, powder coated in white RAL 9003
- Modern fan with silent and efficient 24V DC EC motor
- Fan cover with airflow baffle
- Water connection with 1/2" female thread
- Assembly kit
- Condensate drain pan
- Valves and control system (actuator, built-in controller VERANO-1\*, power module) - factory wired
- Power cable with F-type plug.

### ADDITIONAL EQUIPMENT:

- Casing painted in any RAL colour
- Custom front grille type: honeycomb
- Custom top grille type: linear or roll-up, natural or anodized aluminium
- Condensate pump
- Anti dust filter (causes an output decrease by approx 10%).



Note: Applies to lengths 800 and 980mm.



Note: Applies to lengths 1270 and 1570mm.

\* Note: The built-in controller Verano-1 is only available in the white colour. It is always located on the side of the electrical module (opposite to the water connection side). It is intended to operate only one device.